

# Te Karoro

Mana Ahuriri Trust Quarterly Pānui

April 2025 Newsletter

Kia ora e te whānau,

Welcome to the latest Mana Ahuriri Quarterly Pānui We're thrilled to share updates on recent successes, upcoming events, and opportunities to strengthen our hapū and iwi. Let's dive into the kaupapa!

## Te Muriwai o te Whanga Launch



Te Muriwai o te Whanga

The official launch of Te Muriwai o Te Whanga Plan was a beautiful celebration of partnership and hope for our precious Ahuriri Estuary.

The marae was filled with representatives from Mana Ahuriri Trust, our councils, DOC, and community groups – all united in our vision to restore the mauri of Te Whanga.

As the whakataukī says: “Ko rua te paia ko Te Whanga” – The Whanga is the storehouse that never closes. The launch marked the official beginning of our journey to return Te Whanga to its role as a flourishing taonga that provides for our people and environment.

It represents a practical step forward from the 2021 Treaty settlement, bringing together mātauranga Māori, environmental stewardship, and community partnership.

“Seeing the passion and commitment from everyone involved gives me real hope that together, we can heal Te Muriwai o Te Whanga” says Mana Ahuriri Trust’s General Manager Parris Greening. This will benefit our whole community – from the health of our waters and wildlife, to cultural connections, education, and recreation.

Exciting times are ahead as we work together to protect and enhance this precious place for generations to come.

Ngā mihi nui to everyone who contributed to this milestone.

Check out the new website here:

[www.temuriwaiotewhanga.org](http://www.temuriwaiotewhanga.org)

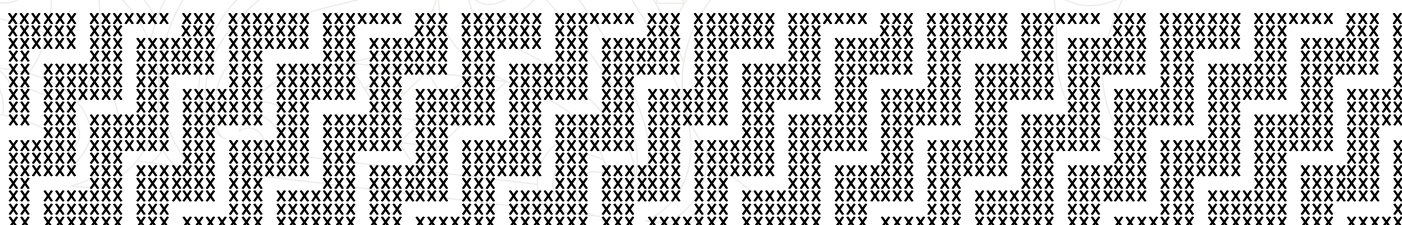
## Expression of Interest: Native Timber from Tuakana Annex building

Mana Ahuriri is seeking expressions of interest for native timber salvaged from the demolition of the Tuakana Annex building at the old Napier Hospital site.

Where suitable, this taonga has been retrieved for whānau, carvers, or community groups to repurpose for cultural, artistic, or practical projects.

Submit a brief proposal outlining your intended use by 19 May 2025 to [info@manaahuriri.org](mailto:info@manaahuriri.org).

Let's honour this resource and keep it within our community.





Sign up or check your status at [manaahuriri.org/register](https://manaahuriri.org/register).





### Kāhui Mai Rā

The Kāhui Mai Rā event on 12 April 2025 was a vibrant celebration of Ngāti Kahungunu identity, held at Te Kura Kaupapa Māori o Te Ara Hou in Ahuriri. The hui raised over \$50,000 towards purchasing Kahurānaki Station, an ancestral maunga and sheep station. Highlights included kapa haka, kai stalls, and inspiring kōrero, with whānau uniting for this kaupapa.

As organiser Turei Kire noted, "This was about whakakotahi—uniting Kahungunu for our maunga and our future." Mihi nui to all who contributed!



Kahuranaki Maunga

### Bayden Barber Re-elected

Bayden Barber has been re-elected as Chair of Ngāti Kahungunu Iwi Incorporated (NKII), securing a second term following a closely contested election against Deputy Chair Thompson Hokianga.

Barber, who first assumed the role in 2022 after unseating long-serving leader Ngahiwi Tomoana, has focused on stabilizing iwi finances, enhancing transparency, and leading through significant challenges, including the closure of Takitimu Seafoods and the impacts of Cyclone Gabrielle.

The 2025 election was notably competitive, with Hokianga, a seasoned leader and Hawke's Bay Regional Councillor, presenting a strong challenge. Barber emphasized the importance of member participation, highlighting that Ngāti Kahungunu is among the few iwi where the chair is elected directly by its members.

Looking ahead, Barber aims to build upon his first term's achievements, with a focus on economic development, education, housing, and environmental stewardship. His re-election reflects the iwi's confidence in his leadership and vision for the future.

### Pātaka Kai – Supporting Our Whānau

We currently have kai provided by the Pokaiwhenua Hunting Club. This initiative supports our kāhui kaumātua and whānau during tangihanga by supplying kai.

Access is limited to registered Mana Ahuriri members or those part of the kāhui kaumātua. Please note, this is not a foodbank service.

For inquiries, contact [info@manaahuriri.org](mailto:info@manaahuriri.org) or 0508 00 6262.

Mihi nui to Pokaiwhenua Hunting Club for their tautoko!



## Sarah Reo Appointed as Director of Mana Ahuriri Holdings Limited

Mana Ahuriri Holdings Limited (MAHLP) has welcomed the appointment of Sarah Reo to its Board of Directors, bringing a wealth of experience in kaupapa Māori governance, legal expertise, and whānau development to the organisation.

MAHLP is the commercial entity of Mana Ahuriri Trust, responsible for managing and growing the collective assets of the Mana Ahuriri hapū following their Treaty settlement. The appointment of Reo strengthens the governance capabilities of the board as the organisation enters a new phase of strategic development.

Reo (Ngāti Kahungunu; Ngāti Rangī; Kai Tahu) is a respected Māori leader with a strong background in business, law, kaupapa Māori enterprise, and community empowerment.

She holds degrees in Law and Arts from Victoria University of Wellington, and graduated from the University of Hawaii with an MBA. She is a Fulbright Scholar, and was made a Member of the New Zealand Order of Merit for her services to education and the community.

She is the founder of Orawa Ltd, a kaupapa-led impact enterprise focused on eliminating whānau poverty through marae-based cultural leadership programmes in Te Matau-a-Māui. Her work is widely recognised for promoting self-determination and holistic development within Māori communities.

Reo also brings governance experience from roles on iwi boards, NFP boards, school boards, Māori Land Trusts and Marae committees. Her ability to bridge commercial strategy with cultural integrity makes her a valuable addition to the MAHLP board.

Her appointment reflects MAHLP's ongoing commitment to ensuring its governance reflects both the aspirations and values of Mana Ahuriri hapū while maintaining a strong commercial focus.



Sarah Reo

## Toitū Te Rongoā Māori Healing Symposium: A Resounding Success

**TOITŪ TE RONGOĀ**  
**MĀORI HEALING SYMPOSIUM**  
**27TH & 28TH MARCH 2025**  
**WAIOHIKI MARAE**  
*HMMCT Maori Research*

The Toitū Te Rongoā Māori Healing Symposium, hosted by Mana Ahuriri Trust in partnership with Harata Meretana Ma Charitable Trust, was a transformative event held in March. Over 200 attendees gathered to explore Māori healing practices, holistic hauora, and community wellbeing.

Highlights included:

**Keynote Speakers:** Renowned rongoā practitioners shared insights on traditional healing methods.

**Workshops:** Hands-on sessions covered mental health, wairua, and mātauranga Māori.

**Community Kōrero:** Whānau discussed integrating rongoā into modern healthcare systems.

A special mihi to Charlotte Mildon and all facilitators and attendees for making this a powerful day of learning and connection.

Ngā mihi nui Thank you for your support in growing the mana of our people, hapū, and iwi. For patai, contact [info@manaahuriri.org](mailto:info@manaahuriri.org) or 0508 00 6262

Mauri ora!  
The Mana Ahuriri Team



**MANA**  
**AHURIRI**  
**TRUST**

**Mana Ahuriri Trust**  
170a Waghorne Street,  
Ahuriri, Napier 4110  
PO Box 12076, Napier 4144  
0508 00 6262  
[info@manaahuriri.org](mailto:info@manaahuriri.org)  
[manaahuriri.org](http://manaahuriri.org)

